



# PSA mouse mAb(ABT114)

|                           |   |
|---------------------------|---|
| <b>Catalog No</b>         | YP-Ab-15618   |
| <b>Isotype</b>            | IgG   |
| <b>Reactivity</b>         | Human; Predict react with Mouse, Rat  |
| <b>Applications</b>       | IHC;WB;IF   |
| <b>Gene Name</b>          | KLK3 APS  |
| <b>Protein Name</b>       | PSA   |
| <b>Immunogen</b>          | Synthesized peptide derived from human PSA  |
| <b>Specificity</b>        | The antibody can specifically recognize human PSA protein.  |
| <b>Formulation</b>        | Liquid in PBS containing 50% glycerol, 0.5% BSA and 0.59% sodium azide.   |
| <b>Source</b>             | Mouse, Monoclonal/IgG2b, Kappa  |
| <b>Purification</b>       | The antibody was affinity-purified from mouse ascites by affinity-chromatography using specific immunogen.  |
| <b>Dilution</b>           | IHC-p 1:100-500, WB 1:200-1000, IF 1:100-500  |
| <b>Concentration</b>      | 1 mg/ml   |
| <b>Purity</b>             | ≥90%  |
| <b>Storage Stability</b>  | -20°C/1 year  |
| <b>Synonyms</b>           | Prostate-specific antigen (PSA;EC 3.4.21.77;Gamma-seminoprotein;Seminin;Kallikrein-3;P-30 antigen;Semenogelase)   |
| <b>Observed Band</b>      |   |
| <b>Cell Pathway</b>       | Secreted.   |
| <b>Tissue Specificity</b> | Cytoplasmic   |
| <b>Function</b>           | catalytic activity:Preferential cleavage: -Tyr- -Xaa-.,function:Hydrolyzes semenogelin-1 thus leading to the liquefaction of the seminal coagulum.,online information:Prostate-specific antigen entry,similarity:Belongs to the peptidase S1 family.,similarity:Belongs to the peptidase S1 family. Kallikrein subfamily.,similarity:Contains 1 peptidase S1 domain.,   |
| <b>Background</b>         | Kallikreins are a subgroup of serine proteases having diverse physiological functions. Growing evidence suggests that many kallikreins are implicated in carcinogenesis and some have potential as novel cancer and other disease biomarkers. This gene is one of the fifteen kallikrein subfamily members located in a cluster on chromosome 19. Its protein product is a protease present in seminal plasma. It is thought to function normally in the liquefaction of seminal coagulum, presumably by hydrolysis of the high molecular mass seminal vesicle protein. Serum level of this protein, called PSA in the clinical setting, is useful in the |



diagnosis and monitoring of prostatic carcinoma. Alternate splicing of this gene generates several transcript variants encoding different isoforms. [provided by RefSeq, Jul 2008],

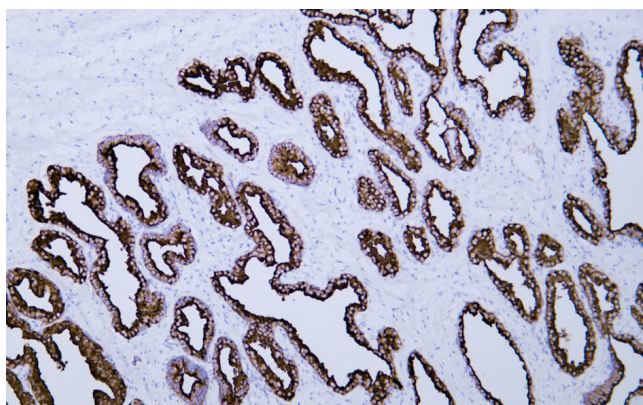
**matters needing attention**

Avoid repeated freezing and thawing!

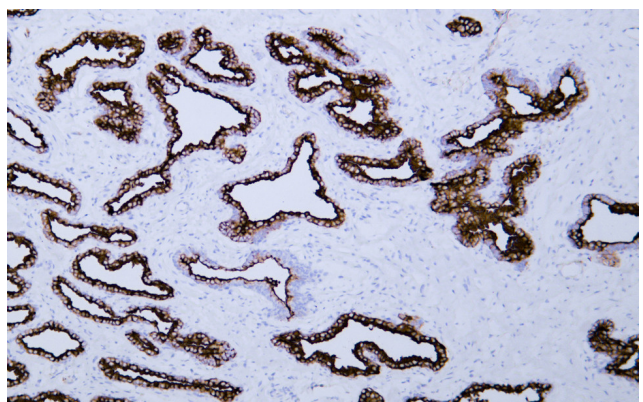
**Usage suggestions**

This product can be used in immunological reaction related experiments. For more information, please consult technical personnel.

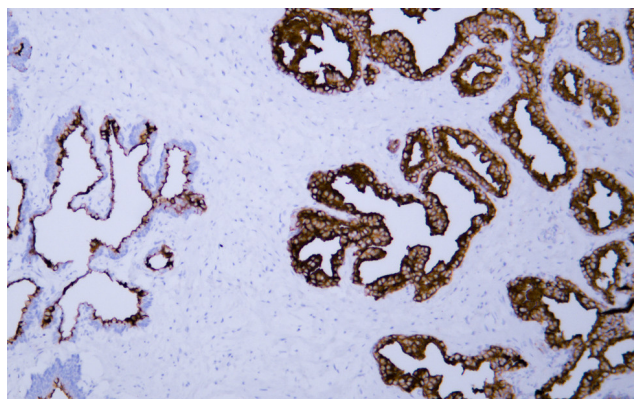
**Products Images**



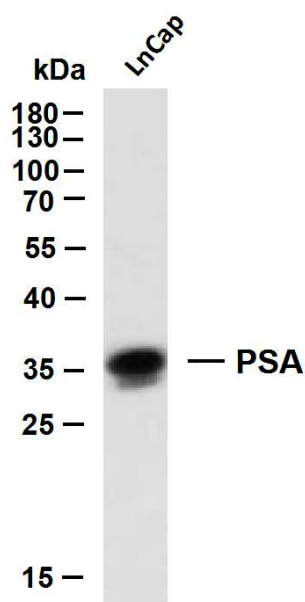
Human prostate tissue was stained with Anti-Prostate-Specific Antigen (ABT114) Antibody. Secondary Antibody was Goat anti Rabbit/Mouse polymer HRP, Ready to Use (RS0011) at 37° 45min.



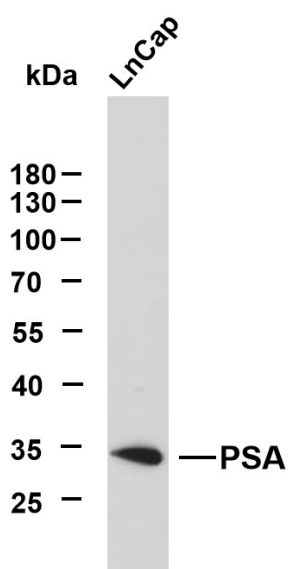
Human prostate tissue was stained with Anti-Prostate-Specific Antigen (ABT114) Antibody. Secondary Antibody was Goat anti Rabbit/Mouse polymer HRP, Ready to Use (RS0011) at 37° 45min.



Human prostate tissue was stained with Anti-Prostate-Specific Antigen (ABT114) Antibody. Secondary Antibody was Goat anti Rabbit/Mouse polymer HRP, Ready to Use (RS0011) at 37° 45min.



Whole cell lysates were separated by 10% SDS-PAGE, and the membrane was blotted with anti-PSA (ABT114) antibody. The HRP-conjugated Goat anti-Mouse IgG(H + L) antibody was used to detect the antibody. Lane 1: LnCap Predicted band size: 28kDa Observed band size: 35kDa



LnCap whole cell lysates were separated by 10% SDS-PAGE, and the membrane was blotted with anti-PSA(ABT114) antibody. The HRP-conjugated Goat anti-Mouse IgG(H + L) antibody was used to detect the antibody. Lane 1: LnCap Predicted band size: 28kDa Observed band size: 28kDa